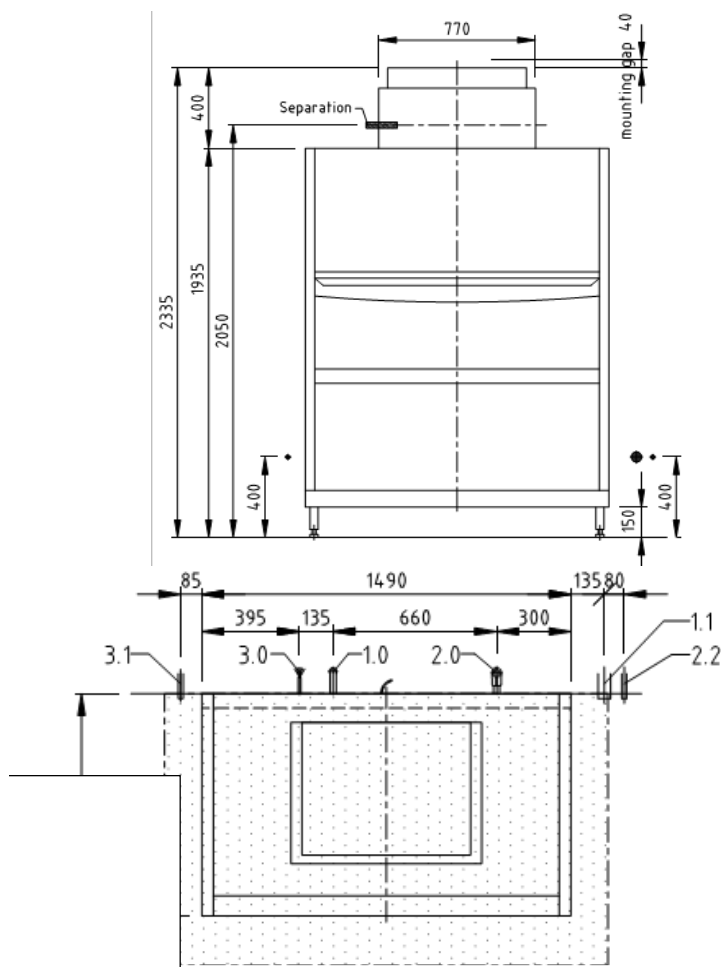




The clean solution

# FV 250.2 Air Concept

## Pot Washing Machine



### MEIKO FV250.2

#### TECHNICAL SPECIFICATIONS

Water consumption L/basket			9
Basket dimensions in mm			1310x700
Passing height in mm			890
#Programme cycle in seconds			120/240/480
A	Water Installation	Size Flow pressure Temperature Water hardness	Hose ¾ “ 1 bar -5 bar Soft cold water Max 53.4ppm
C	Sanitary Waste	Pump out drain	Hose ¾ “
E	Electrical connection	Three phase	3NPE 400V 50Hz, 22.8Kw

#### Product Features & Benefits

- Fully insulated chamber and door as standard
- 3 Program cycles with varying pump pressure
- AktivPlus drain filter system for excellent wash results due to double filtered fresh water
- Fully electronic control system MIKE 2 with integrated infrared technology for rapid service
- Stainless Steel wash and rinse arms – top & bottom
- Rinse aid pump as standard
- Self-cleaning program for easy, hygienic cleaning of the wash chamber
- Above average entry height which is ideal for tall dishware including large plates and trays
- Anua Stop system with base drain tray for early

#### Optional Feature

- Liquid Detergent Dosing Unit

#For connection to cold water and/or short basket exchange times, the wash cycles may increase to achieve hygienic final rinse temperatures.