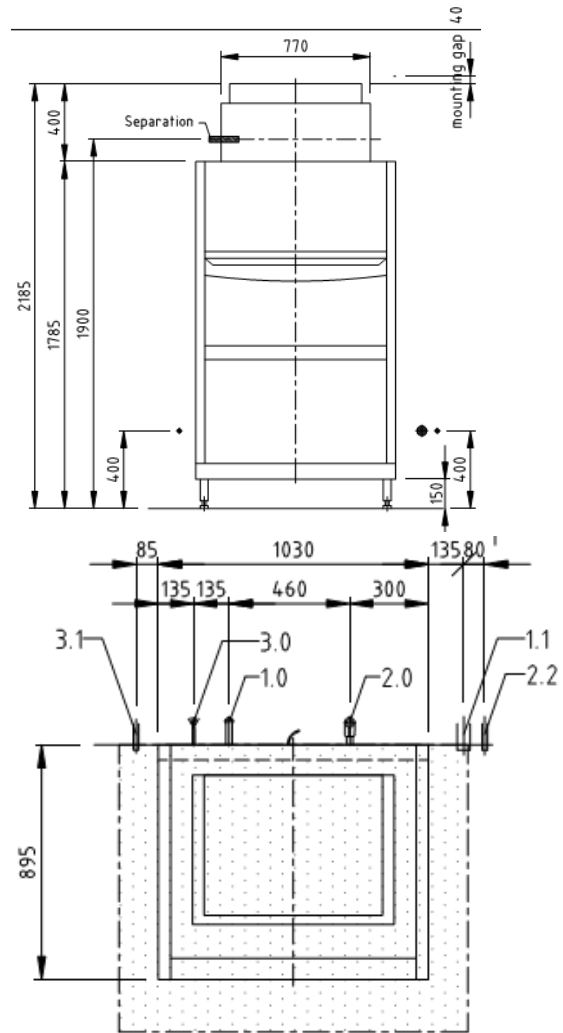


FV 130.2 Air Concept

Pot Washing Machine



Product Features & Benefits

- 3 Program cycles
- Fully insulated chamber and door as standard
- AktivPlus drain filter system for excellent wash results due to double filtered fresh water
- Fully electronic control system MIKE 2 with integrated infrared technology for simple and rapid service
- Stainless Steel wash and rinse arms for demanding use
- Floor clearance 150mm
- Rinse aid pump as standard
- Self-cleaning program for easy, hygienic cleaning of the wash chamber
- Integral Class 'A' air gap
- Wash tank pressed with coved corners
- Aqua Stop system with base drip tray for early intervention on any leaks in the machine

MEIKO FV130.2

TECHNICAL SPECIFICATIONS

Water consumption L/basket			5.8
Basket dimensions in mm			850 x 700
Passing height in mm			740
#Programme cycle in seconds			120/240/360
A	Water Installation	Size Flow pressure Temperature Water hardness	Hose ¾ “ 1 bar -5 bar Soft cold water Max 53.4ppm
C	Sanitary Waste	Pump out drain	Hose ¾ “
E	Electrical connection	Three phase	3NPE 400V 50Hz, 12.0Kw

Optional Features

- Liquid Detergent Dosing Unit
- Air Concept heat recovery

#For connection to cold water and/or short basket exchange times,