



The clean solution

# DV 270.2 Air Concept

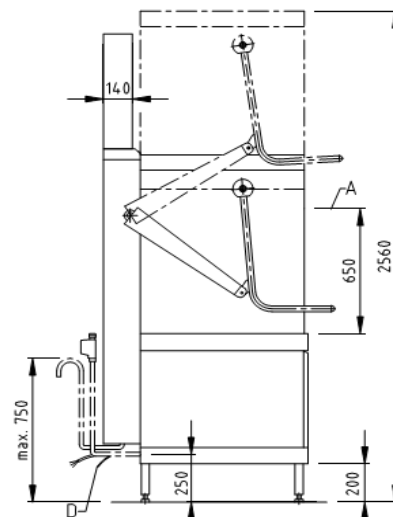
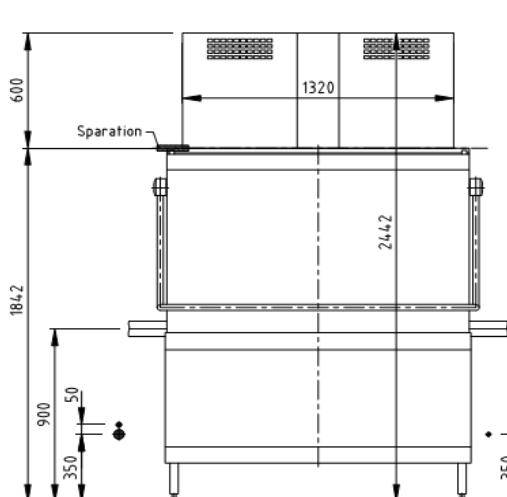
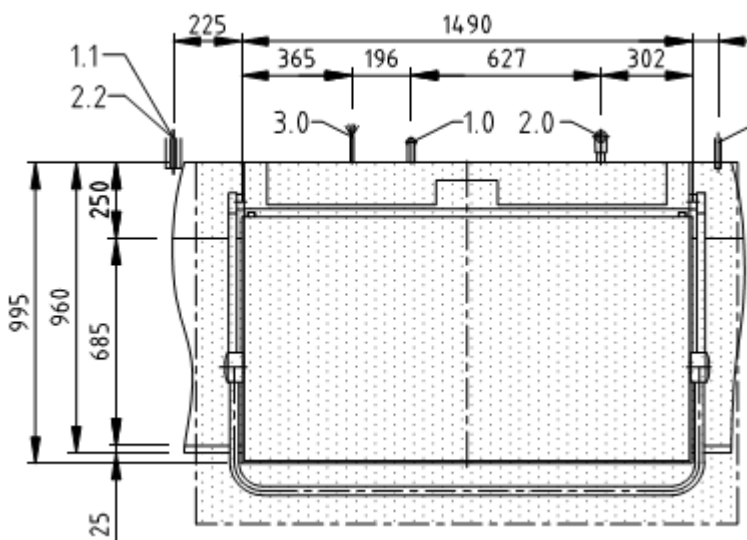
## Pot Washing Machine



MEIKO DV270.2			
TECHNICAL SPECIFICATIONS			
Water consumption L/basket		9	
Basket dimensions in mm		1310x700	
Passing height in mm		890	
#Programme cycle in seconds		120/240/480	
A	Water Installation	Size Flow pressure Temperature Water hardness	Hose ¾ " 1 bar -5 bar Soft Cold water Max 53.4ppm
C	Sanitary Waste	Pump out drain	Hose ¾ " 
E	Electrical connection	Three phase	3NPE 400V 50Hz, 19.9Kw

### Product Features & Benefits

- Fully insulated chamber and door as standard
- 3 Program cycles with varying pump pressure
- AktivPlus drain filter system for excellent wash results due to double filtered fresh water
- Fully electronic control system MIKE 2 with integrated infrared technology for rapid service
- Stainless Steel wash and rinse arms – top & bottom
- Rinse aid pump as standard
- Self-cleaning program for easy, hygienic cleaning of the wash chamber
- Above average entry height which is ideal for tall dishware including large plates and trays
- Aqua Stop system with base drip tray for early intervention on any leaks in the machine



### Optional Features

- Liquid Detergent Dosing Unit
- Air Concept heat recovery
- Automatic Opening Hood

#For connection to cold water and/or short basket exchange times, the wash cycles may increase to achieve hygienic final rinse temperatures.